

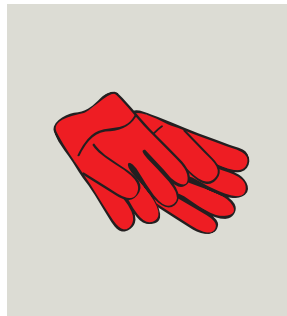
## Product Usage Guide

Professional

### BC040-1



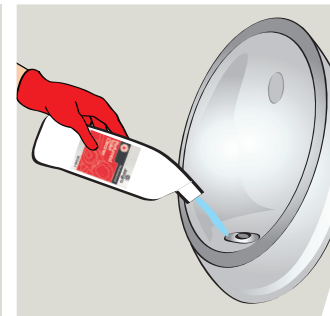
#### Toilets and Urinals



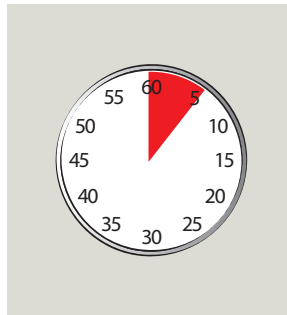
**1** Use appropriate PPE as indicated in the Safety Data Sheet.



**2** Place Safety Signs.



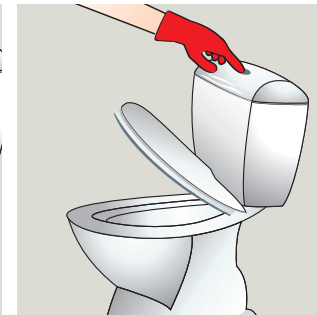
**3** Push back water and apply undiluted solution to the urinal, toilet bowl and under the rim.



**4** Leave for 5 minutes.



**5** Agitate with brush if necessary.



**6** Flush with clean water.



**7** Remove Safety Signs.

#### Health & Safety

Please refer to relevant COSHH Safety Data Sheet



Scan for further product details